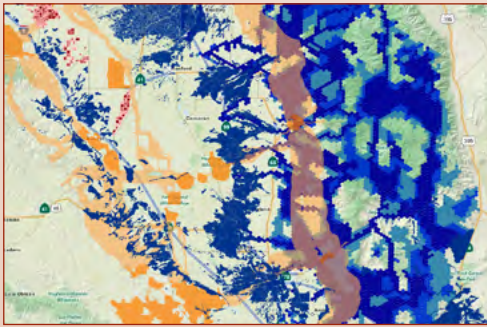




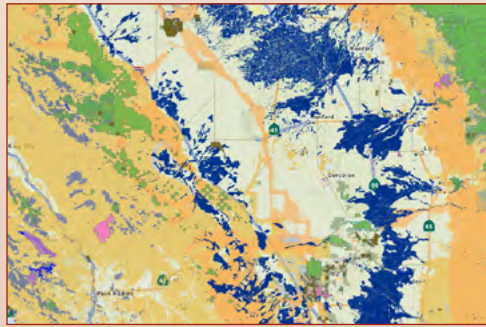
## Land Use and Natural Resource Integration

The Tulare Basin Wildlife Partners (TBWP) launched a new program in 2014 – Land Use and Natural Resource Integration (LUNRI) – to provide county planners and decision-makers with guidelines to make sustainable, long-term land use choices that strike a balance between growth and protecting the natural resources upon which we all depend. This program was funded by a grant from the Fresno Regional Foundation.

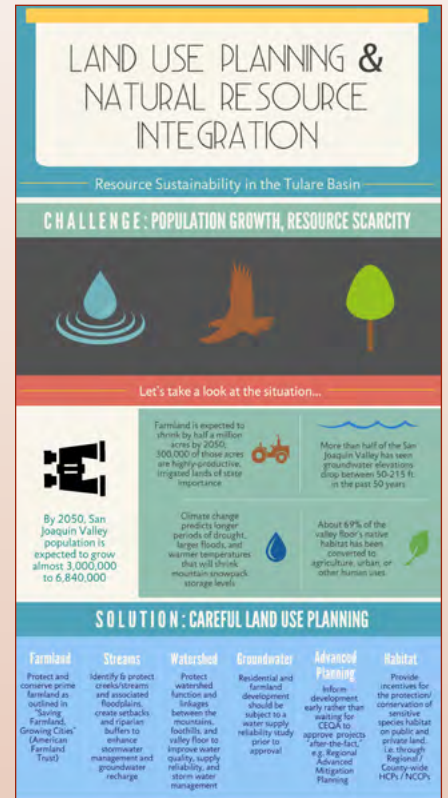
The project's deliverables include: developing seven land use recommendations/guidelines, printing and distributing the LUNRI Guide, launching an online LUNRI resource page, developing land use mapping composites based on San Joaquin Valley Greenprint data, and conducting outreach to county planners and elected officials in Tulare, Fresno, and Kings Counties. You can access more information about the project, the LUNRI guidebook, and land use maps on the [TBWP's LUNRI web page](#).



[Click to view full size map: Multi-benefit groundwater recharge potential](#)



[Click to view full size map: Land use and conservation strategies](#)



[Click to view full size LUNRI graphic](#)

## What's New at TBWP?

TBWP welcomes **John Vollmar** and **Katie Young** from Vollmar Natural Lands Consulting (VNLC) to the TBWP Team as partners and the new coordinators for the Tulare Basin Watershed Initiative. John, the founder of VNLC, and Katie will provide TBWP with technical expertise in natural resource assessment for conservation and restoration projects in the Tulare Basin. With their guidance, the TBWP shifts its work focus to that of project implementation, based on the [conceptual project list](#) it has developed and refined over the last few years. Katie and John joined the team, along with Dave Clendenen, to conduct work on the TBWP's Department of Conservation Watershed Coordinator grant extension to address drought conditions (see [13th Quarter Progress Report](#)). TBWP will continue to fulfill its role as a regional leader, facilitating collaborative partnerships that advance the whole system health and sustainability of the Tulare Basin watershed.

## Support the TBWP, Support the Tulare Basin

Please support the ongoing efforts of the Tulare Basin Wildlife Partners to convene partners, disseminate valuable watershed information, build consensus on land use sustainability strategies, and implement multi-benefit conservation and restoration projects. *Your support matters!*

## Regional News & Updates

Rob Hansen, TBWP Board President and Biology Professor at College of the Sequoias, recently presented a thorough overview of the Tulare Basin's unique history, ecology, and hydrology to a packed lecture room at Southern California Edison's Annual Water Conference. At least 200 regional and statewide water leaders were present to learn more of the watershed's unique challenges and opportunities.

Welcome Michael Dunphy, the new Coordinator for the [Central Valley Joint Venture](#), effective December 1! He joins the Central Valley Joint Venture at an important time. He will be responsible for leading the effort to develop, finalize, and implement the Implementation Plan by working with the CVJV Board and all the partners in the Central Valley. Mike has been working in the conservation and restoration field for more than fifteen years.

The [Watershed Connections Working Group](#), launched by the TBWP as an evolution of the Tulare Basin Working Group, is led by Michelle Selmon, Senior Environmental Scientist for the Department of Water Resources (DWR) and Vice Chair for the California Landscape Conservation Cooperative. The group is working collaboratively to consider climate-resilient, multi-benefit projects that strengthen the health and adaptability of the whole watershed, from top to bottom.